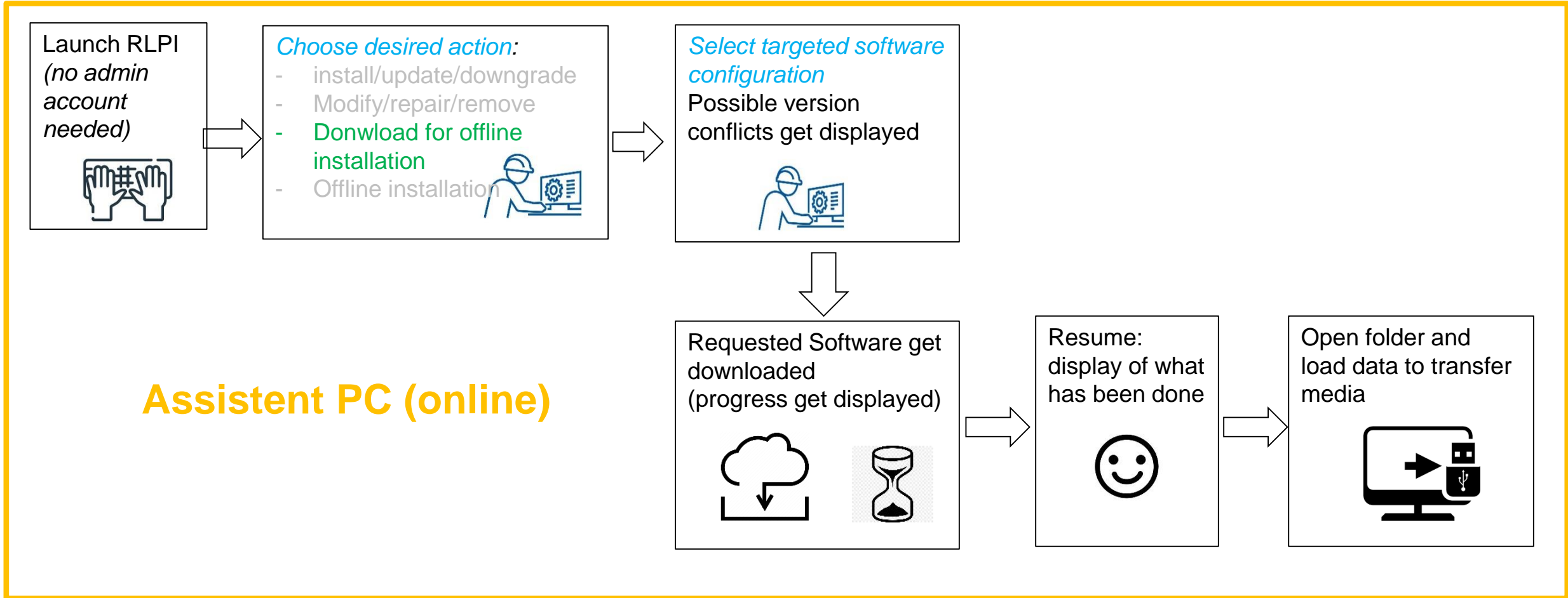


# WORKFLOW 2-a (SYSTEM OFFLINE)




# WORKFLOW 2-b (SYSTEM OFFLINE)

Copy data from media to HDD



Launch RLPI and *enter Admin access data*

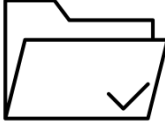


*Choose desired action:*


- install/update/downgrade
- Modify/repair/remove
- Download for offline installation
- **Offline installation**



Select folder on HDD where to find the installations




Checking current installation and display result



## Target PC (offline)

*Select targeted software configuration*  
Possible version conflicts get displayed



*Confirm license agreements and choose from possible installation options*



Software get installed, firmware uploaded to card (progress get displayed)



Resume: display of what has been done

